

New solutions for more sustainability, safety, comfort, design and efficiency

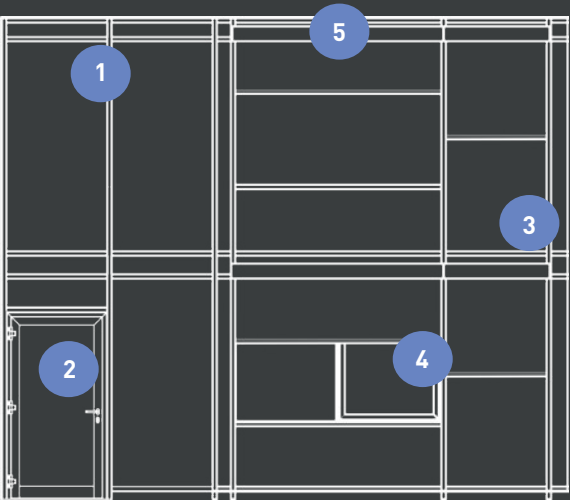
# Product and service innovations BAU 2025



**heroal**



Curtain wall solution with versatile integration systems



- 1. Fire protection curtain wall system heroal C 50 FP **new**
- 2. Fire protection door system heroal FireXtech D 93 FP 30 CE
- 3. Curtain wall system heroal C 50
- 4. Window system heroal W 72 i
- 5. Sun protection system heroal VS Z CS partly integrated **new**



heroal C 50 FP 30

1. Fire protection curtain wall system **new**

- » Can be installed as a curtain wall in front of the story ceiling
- » Invisible transition to façades without fire protection requirements (optically identical to heroal C 50)
- » Filling thicknesses from 28 mm to 62 mm
- » HI variant possible with triple glazing (up to 62 mm thickness) (available)
- » Cross glass beams enable filling weights of up to 800 kg
- » Integrated system solution in combination with the fire protection door system heroal FireXtech D 93 FP 30 CE
  
- » Available from 4th quarter 2025

heroal FireXtech D 93 FP 30 CE (available only for the german market)

2. Fire protection door system

- » Modular construction allows flexible adaption to fire protection requirements: 30, 60, 90 min. fire resistance
- » High structural stability combined with elegant design
- » High number of tested glass options
- » Simple, efficient fabrication
- » Fire protection door system heroal D 93 FP available for interior and exterior use
- » Integrated system solution in combination with the fire protection façade system heroal C 50 FP 30 CE

heroal C 50

3. Curtain wall system

[Click for more details](#)

- » Mullion-transom curtain wall
- » Various combinations with insert elements such as windows and doors as well as system additions such as sun protection (here heroal VS Z CS)
- » Seamless transition to the fire protection façade (heroal C 50 FP)
- » Time-saving and process-reliable fabrication

heroal W 72 i

4. Floating window

[Click for more details](#)

- » Slim sash as block window maximizes glass viewing area
- » Concealed heroal WF i EM window fitting ensures a seamless profile appearance
- » Reduced processing time for fitting installation
- » Easy insertion and removal of the window sash with quick-release closures

heroal VS Z CS partly integrated

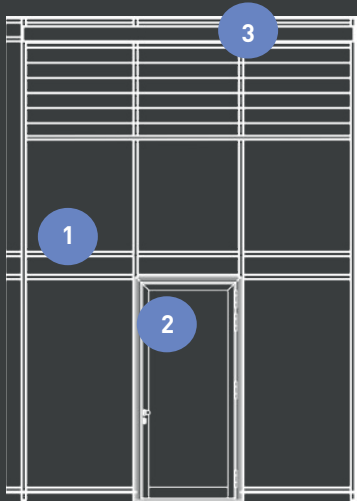
5. Sun protection system **new**

[Click for more details](#)

- » Seamless integration into the mullion-transom curtain wall heroal C 50 or curtain walls from other manufacturers
- » Trade separation between curtain wall and sun protection system
- » High wind stability due to installation close to the façade
- » Color and surface uniformity of façade and sun protection profiles
  
- » Available as system solution and heroal Ready element



Curtain wall solution with versatile integration systems



- 1. Curtain wall system heroal C 50
- 2. Project door system heroal D 72 panic
- 3. Venetian blind system heroal VB Free new

heroal C 50  
**1. Curtain wall system**

[Click for more details](#)

- » Mullion-transom curtain wall with modular thermal insulation
- » Filling thicknesses from 4 mm to 68 mm
- » Various integration and insert elements such as bi-folding door systems, lifting-sliding systems or sun protection
- » Time-saving and process-reliable fabrication
- » No glass bonding required up to 2 m sash leaf height in combination with RC 2

heroal D 72 panic  
**2. Panic door as an insert element in the facade**

- » Certified door solution for escape and rescue routes
- » Integration into the heroal C 50 curtain wall system
- » Barrier-free threshold solutions according to DIN 18040-1/2
- » Tested fittings for 1- and 2-leaf door elements for partial or full panic in compliance with DIN EN 1125

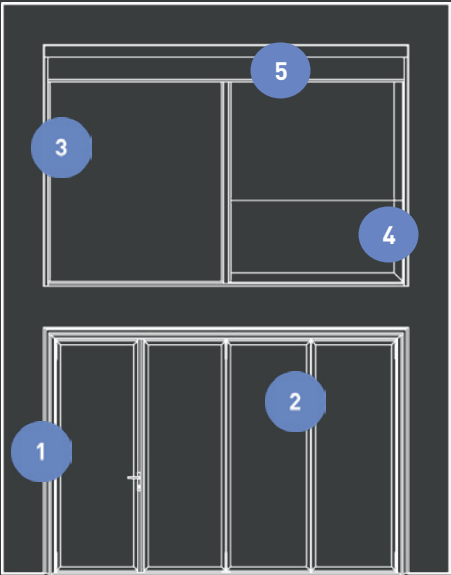
heroal VB Free  
**3. Venetian blind system** new

[Click for more details](#)

- » Self-supporting installation via guide rails on the façade or window (no additional box mounting required)
  - » Efficient and time-saving installation due to the high degree of pre-assembly of the systems
  - » Color and surface uniformity of the façade and sun protection profiles
  - » Customized slat and cover types for diverse design and functional requirements
- 
- » Available for projects with heroal window and facade systems



Sliding elements with integration systems



- 1. Curtain wall system heroal C 50
- 2. Solarlux Highline bi-folding door system **new**
- 3. Lifting-sliding system heroal S 77 SL
- 4. Fall protection system heroal FPS **new**
- 5. Sun protection system heroal VS Z



heroal C 50

1. Curtain wall system

- » Mullion-transom curtain wall with modular thermal insulation
- » Filling thicknesses from 4 mm to 68 mm
- » Various integration and insert elements such as bi-folding door systems, lifting-sliding systems or sun protection
- » Time-saving and process-reliable fabrication
- » No glass bonding required up to 2 m sash leaf height in combination with RC 2

Click for more details

Solarlux Highline

2. Bi-folding door system **new**

- » Integration into the heroal C 50 curtain wall system
- » 4-panel outward folding, barrier-free with LED-lit threshold
- » High-quality and coordinated colors and surfaces of the heroal and Solarlux elements
- » Coordinated technical interfaces and element connections with the heroal curtain wall system
- » Availability in planning

heroal S 77 SL

3. Lifting-sliding system

- » Perfect combination of transparency and thermal insulation
- » Fixed glazing with the narrowest face widths
- » 90° corner design as all-glass corner or sash corner for opening available
- » Unlimited mobility with barrier-free threshold

Click for more details

heroal FPS

4. Fall protection system **new**

- » Fall protection in the passage area of the lifting-sliding door
- » Slim profiles in profile color and concealed attachment
- » Easy-to-install mounting technology
- » Glass installation possible in fully assembled frames
- » Compatible with sun protection systems without additional distancing

» Available as system solution from 3rd quarter 2025 (only for the german market)

heroal VS Z

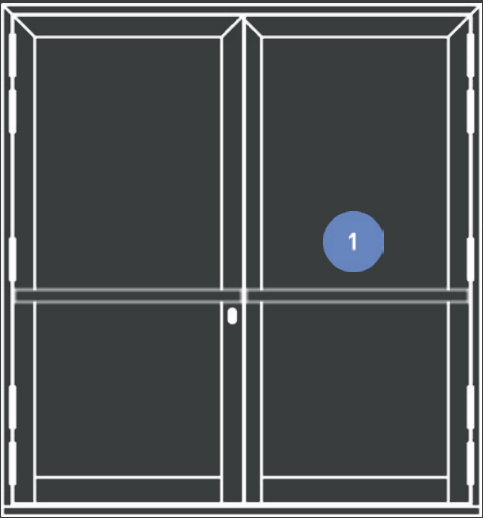
5. Sun protection system

- » Textile zip screen
- » Shading of large areas possible
- » More than 250 textiles available, from nearly transparent to blackout (up to 100 %)
- » Wind stable up to 145 km/h

Click for more details

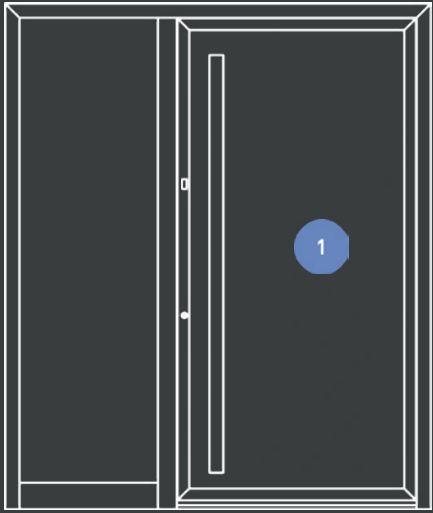


# Burglar-resistant full panic door with RC 3




1. Project door system heroal D 72 RC 3 full panic new
- » Burglar-resistant RC 3 according to DIN EN 1627 in combination with full panic doors according to EN 1125
  - » 1-leaf and 2-leaf design, sash design with base profile
  - » Threshold solutions: with base threshold or zero-barrier threshold
  - » Self-locking locks, touchbar and various hinge options
  - » Additional components for burglar-resistance
- » Available from 3rd quarter 2025

# Entrance door system for a fast and efficient fabrication

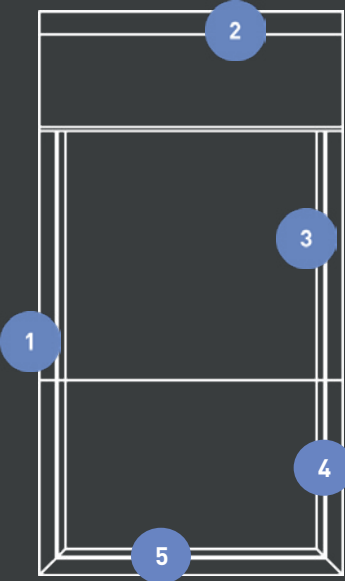


1. Front door system heroal D 72 PF EM
- » For the first time, a reversible / double-sided clip-on system for fast and efficient door production (-20% lead time)
  - » Reduction of work steps and materials
  - » Single- and double-sided casement overlapping
  - » Extension of the product family with a sash profile (single-sided flush casement) for 60 mm thick door panels

Click for more details 



heroal W 72 plus - The innovative complete solution



- 1. Window system heroal W 72
- 2. Sun protection system heroal VS Z
- 3. Insect protection system heroal IS
- 4. Fall protection system heroal FPS
- 5. heroal window sill system



heroal W 72 plus

Complete solution new

Click for more details

- » Complete solution with window, textile screen, fall protection, insect protection and window sill
- » High-quality design with color and surface uniformity of all aluminum profiles
- » Reduced fabrication and installation time due to clip-on profile geometries
- » Configuration and ordering of components via the heroal Business Configurator
- » Available from 4th quarter 2025

heroal W 72

1. Window system

Click for more details

- » Efficient and durable TPE center seal and corners without seals or adhesives
- » Slim sash ensures maximum glass viewing area with high security
- » Concealed heroal WF i EM window fitting ensures a seamless profile appearance
- » Reduction in processing time during hardware installation
- » Easy installation and removal of the window sash thanks to quick-release fasteners
- » No glass bonding required up to 2 m sash leaf height in combination with RC 2

heroal VS Z

2. Sun protection system

Click for more details

- » Seamless integration of fall and insect protection in the heroal VS Z sun protection system
- » Reduced fabrication and installation time due to clip-on profiles
- » Narrow face width of the guide rail heroal GR i with 34 mm (48 mm face width incl. fall protection)
- » Color and surface uniformity with the heroal system portfolio

heroal IS

3. Insect protection system

Click for more details

- » Positioning of the insect screen in the new lower sun protection panel of heroal VS Z
- » Insect screen can be retrofitted at any time
- » Low operating force and smooth run of the insect screens thanks to new spring mechanism
- » Security lock in lower end position by means of end slat catch

heroal FPS

4. Fall protection system

Click for more details

- » Slim profiles in profile color and concealed attachment
- » Easy-to-install mounting technology
- » Glass installation possible in fully assembled frames
- » Compatible with sun protection systems

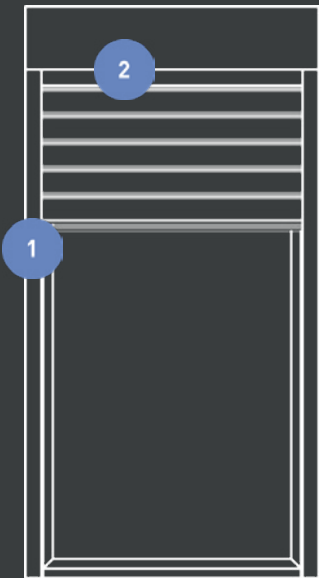
Window sill

5. Window sill system

- » Quick and easy installation
- » Suitable for all common reaches
- » Edge pieces for clinker and plaster connections
- » Free choice of colors
- » Color and surface uniformity with the heroal system portfolio



Barrier-free french door with top-mounted roller shutters



- 1. Window system heroal W 72 new
- 2. Roller shutter system heroal RS 52 SW new

heroal W 72

1. Window system innovations new

- » Efficient and durable TPE center seal and corners without seals or adhesives
  - » Expansion of the heroal W 72 portfolio with a magnetic threshold that allows level floor transitions, two magnetic profiles embedded in the frame automatically lift when the French door is closed, sealing the interior, when opened, they return to their original position
  - » Hinged French door according to DIN 18040 Barrier-free building standards, optionally with handle-operated turn limiter
  - » Efficient installation of the sash profiles thanks to optimised corner connectors
- 
- » All window innovations available from 4th quarter 2025

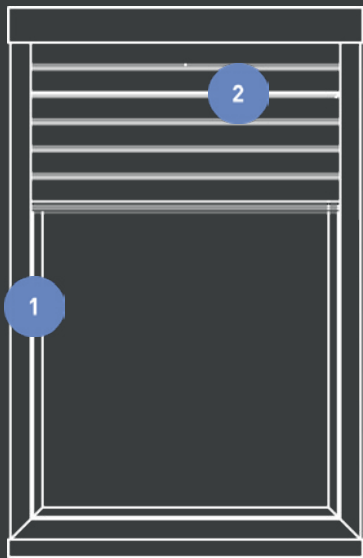
heroal RS 52 SW

2. Roller shutter system new

- » New slat geometry heroal RS 52 SW extremely narrow winding
  - » Slat system with optimal technical features and wide range of colors
  - » New angled end strips in 2-part version for easy clip installation with revision options
  - » Angled end strips with lower angle for flush finish on the panel box
- 
- » Available as system solution from 3rd quarter 2025
  - » Available as heroal Ready from 4th quarter 2025



Flush-fit window system with narrow wound roller shutter



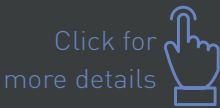
- 1. Window system heroal W 77 **new**
- 2. Roller shutter system heroal RS 37 SW **new**

heroal W 77

1. Flush-fit window system **new**

- » High-quality flush design with new frame profile variant
- » Flush design inside and outside
- » Concealed fittings heroal WF i EM
- » Handle-controlled opening limiter according heroal WF i EM to DIN 13126-5 class 5/6 (available from Q2 / 2025)
- » No clearance of the fitting groove necessary

» Available from 4th quarter 2025



heroal RS 37 SW

2. Roller shutter system innovations **new**

- » Realisation of compact box sizes thanks to new, extremely small winding slat geometry heroal RS 37 SW
- » Driving rain-proof guide rails certified up to 600 Pa for mini slat systems with 20 mm distance to the frame
- » Angled end strips with lower angle for flush finish on the panel box, available as left and right roller variants
- » Solar motor with integrated battery for space-saving installation in the roller shutter box

» Available as a system solution from 3rd quarter 2025

» Available as heroal Ready from 4th quarter 2025





Digital services and solutions

heroal smartScan

Digital support for incoming goods new

- » The new smartScan function of the heroal Communicator facilitates incoming goods monitoring and provides a better overview in the warehouse
  - » With the help of data matrix codes as well as QR and barcodes, specialist partners can quickly and easily access information such as delivery notes and commissions for delivered heroal items directly in the warehouse
  - » In addition to the data matrix code, QR and barcodes on heroal profiles, packaging labels and pallets can also be scanned
  - » heroal smartScan also offers flexible export options and can be easily integrated into existing ERP systems thanks to an API
  - » This allows warehouse processes to be organised more efficiently and digital processes to be linked seamlessly
- » Available from 2nd quarter 2025

Click for  
more details



Digital services and solutions

picos ID

The digital product passport refined new

- » picos ID offers an innovative solution that turns the digital product passport into a central interface between fabricators, installers and end customers
  - » An intelligent QR code system transparently and digitally links all relevant information about a structural element across the entire life cycle, from production through to completion, installation and maintenance
  - » Product-related data, such as CE documents, are available in real-time and ensure the seamless provision of information
  - » It is an open system platform that can be flexibly used without the need for other picos products.
  - » The optional connection to picos IFS enables efficient installation planning, precise quality controls, structured acceptance and the central management of all service processes
- » Available from 3rd quarter 2025

Click for  
more details






## Sustainability

heroal Low Carbon Aluminium

### For sustainable building projects new

- » From 2025, heroal also offers all system solutions based on CO<sub>2</sub>-reduced aluminium and recycled post-consumer aluminium (heroal Low Carbon Aluminium)
  - » By combining renewable energies, innovative production methods and recycling, heroal Low Carbon Aluminium can be used to make an even greater contribution to the construction of sustainable buildings and reduce their carbon footprint
  - » With its DEKRA-certified offer, the company achieves a carbon footprint of up to 1.9 kg CO<sub>2</sub> e/kg aluminium (LC-Al C1.9) and a recycling rate of up to 75% (LC-Al R75)
  - » This means that heroal system solutions can now help to implement construction projects with even higher sustainability requirements as well as projects within the scope of the Green Building Standards
- » Available from 1st quarter 2025

Click for  
more details 







Thank you for visiting our stand.

If you have any questions or require further information, please do not hesitate to contact us and we look forward to hear from you.

Roller shutters | Sun protection | Roller doors | Windows | Doors | Sliding doors | Curtain walls | Patio roofs

**heroal – Johann Henkenjohann GmbH & Co. KG**

Österwieher Str. 80 | 33415 Verl (Germany) | Tel. +49 5246 507-0 | Fax +49 5246 507-222 | [www.heroal.com](http://www.heroal.com)